

VIP CASE STUDIES

VALUE IS PARAMOUNT



VALVES INSTRUMENTS PLUS LTD
SUPPLIERS TO THE BUILDING SERVICES, PROCESS & PLUMBING INDUSTRIES

ABOUT US.

Formed in 1985, VIP has earned a reputation for setting the standards in quality, service and reliability. Our technical expertise is based around years of experience supplying a wide range of products to various industries. VIP is not just a normal supplier as we supply our own branded products with our valve, expansion & plumbing divisions. Alongside this we also represent many major brands who as per our own brand are specified by leading consultants.



BRANDS VIP REPRESENT





VALUE IS PARAMOUNT

MISSION STATEMENT

Valves Instruments Plus provide quality products at competitive prices, whilst offering excellent after sales service and customer experience.

“Price is what you pay, value
is what you get”

Warren Buffett

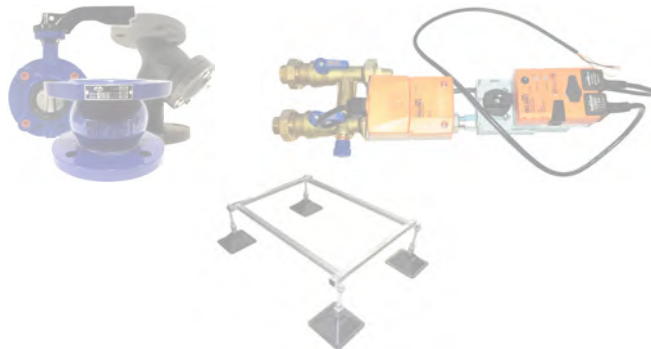
“The bitterness of poor quality remains long
after the sweetness of low price is forgotten”

Benjamin Franklin

BARCLAYS.

One Churchill Place is a 156 m tall skyscraper with 32 floors, serving as the headquarters of Barclays Bank. It is in the Docklands area of London Borough of Tower Hamlets in Canary Wharf. The building is the 13th-tallest office block in the United Kingdom and the sixth tallest building in the Docklands when constructed.

Over the period of the project, VIP supplied our own branded range of Cast Iron products, including non return valves, butterfly valves and strainers. Union ended VIP 'Warrior' bespoke hook-up sets with Belimo PICV's for fan coil applications. VIP also supplied a range of rooftop support systems.





NEWFOUNDLAND.

One of newest additions to the London skyline the thriving 97-acre Canary Wharf estate has a new landmark. Recently topping out to reach its full height of 729ft, comprising 636 private rented apartments. Newfoundland will be a world class mixed use development over a total of 58 floors, at the western end of the Canary Wharf Estate, close to the River Thames.

VIP assisted this application using carbon steel high performance valves, rated to 40bar supplied with S/S disc and reinforced PTFE seats.



NEWFOUNDLAND, LONDON



BARNESLEY METRODOME

An award winning multifunctional venue offering a wide range of leisure activities. Home to Calypso Cove Waterpark, Metrodome Bowling and Your Space Metrodomo.

VIP supplied & worked closely with our customer and supplier Armstrong Pumps, to specify and select the most efficient pump to ensure the correct selection along with S/S check valves, Ebro butterfly valves, pressure gauges, transducers and thermocouplers.





SKRIP

FLAME

CALYPSO COVE

WET SUITS ONLY
NO LIFE GUARDS

WATER

THE DORCHESTER.

The Dorchester is a five-star luxury hotel on Park Lane and Deanery Street in London, to the east of Hyde Park. It is one of the world's most prestigious and expensive hotels.

This was one of the major projects that VIP first supplied and really opened the door to business into the capital. VIP supplied a range of tied and untied rubber bellows with some S/S hoses in the plant room at the award winning hotel when recently purchased by the Sultan Brunei.



THE DORCHESTER

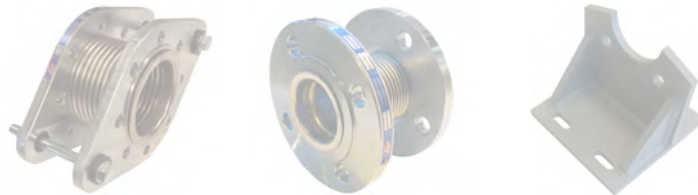


The Dorchester

LEWISHAM EXCHANGE.

Lewisham Exchange is a new build development providing 758 student rooms and 67 affordable homes across two towers of 35 and 20 storey's, revitalising Lewisham town centre and making a significant contribution to the town's ongoing regeneration.

VIP worked with the client on this project from a very early stage as part of the expansion design service we provide. VIP supplied axial expansion joints, pump connectors, anchors, guides as well as bespoke hercules anchors points.



LEWISHAM EXCHANGE



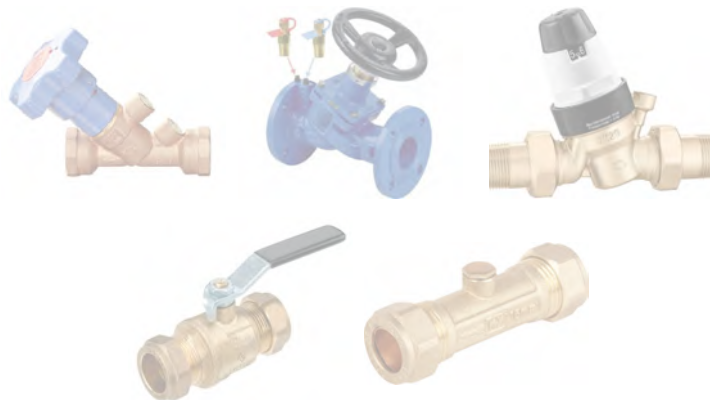
Line	Destination	Time
101	181 284	
102	484 621	
103	N21	

STYLIS
CONTEMPORARY
ARTS

BEETHAM TOWER.

Beetham Tower, Manchester's most iconic development, stands 171 metres tall and 48 floors high. With unrivalled views stretching as far as Snowdonia and the Irish Sea the impressive building consist of the Hilton hotel as well residential apartments.

This project is significant for VIP as we initially provided a range of products for the opening back in 2006 but since have serviced Beetham Tower over the years from a maintenance perspective. We supplied our own branded range of commissioning valves, DZR ball valves, PRV's to control the high pressures and a full range of our WRAS domestic valves.



BEETHAM TOWER



Keep boat
forward of
cill marker



Keep
boat
forward
of
cill

ROYAL WHARF.

Contains over three thousand apartments and town houses. Plus commercial, retail, leisure units, and educational facilities. Phase one of the Royal Wharf development includes seven mixed use residential and retail blocks, with 743 apartments & 68 town houses.

Mainly own brand valves from the plantroom to all domestic valves in the apartments as well a copper press fit fittings.

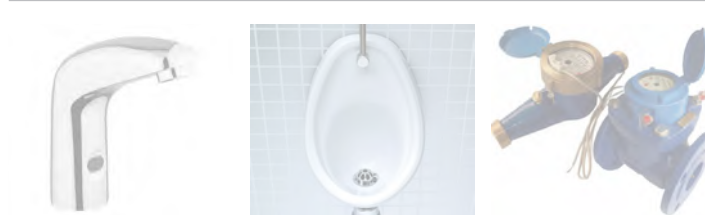




FIRST STREET.

An ambitious regeneration project in the centre of Manchester at the intersection of its creative and knowledge corridors. The new neighbourhood includes more than 800 homes in First Street South and 2 million sq feet of workplace buildings within First Street Central.

VIP was involved with many products on this project. We supplied a range of sanitary items including infrared taps and a range of water meters with pulsed outputs.



FIRST STREET, MANCHESTER



MEDIA CITY.

Media City is the home to the likes of the BBC, ITV, Ericsson, dock10 and Kellogg's, and complemented by more than 250 businesses. As a focal point for nurturing the best talent and host to a wide variety of leisure activities, MediaCityUK is a vibrant destination to work, live and play, on the banks of the Manchester Ship Canal.

Being close to our Manchester home, VIP have supplied lots of products into many of projects in the regenerated area. Many of our services have been used in the hotels, shopping centres, offices, BBC studios, apartments & hotels to name a few supplying drainage, MLCP, 'Warrior' hook-ups and booster sets.



MEDIA CITY, MANCHESTER

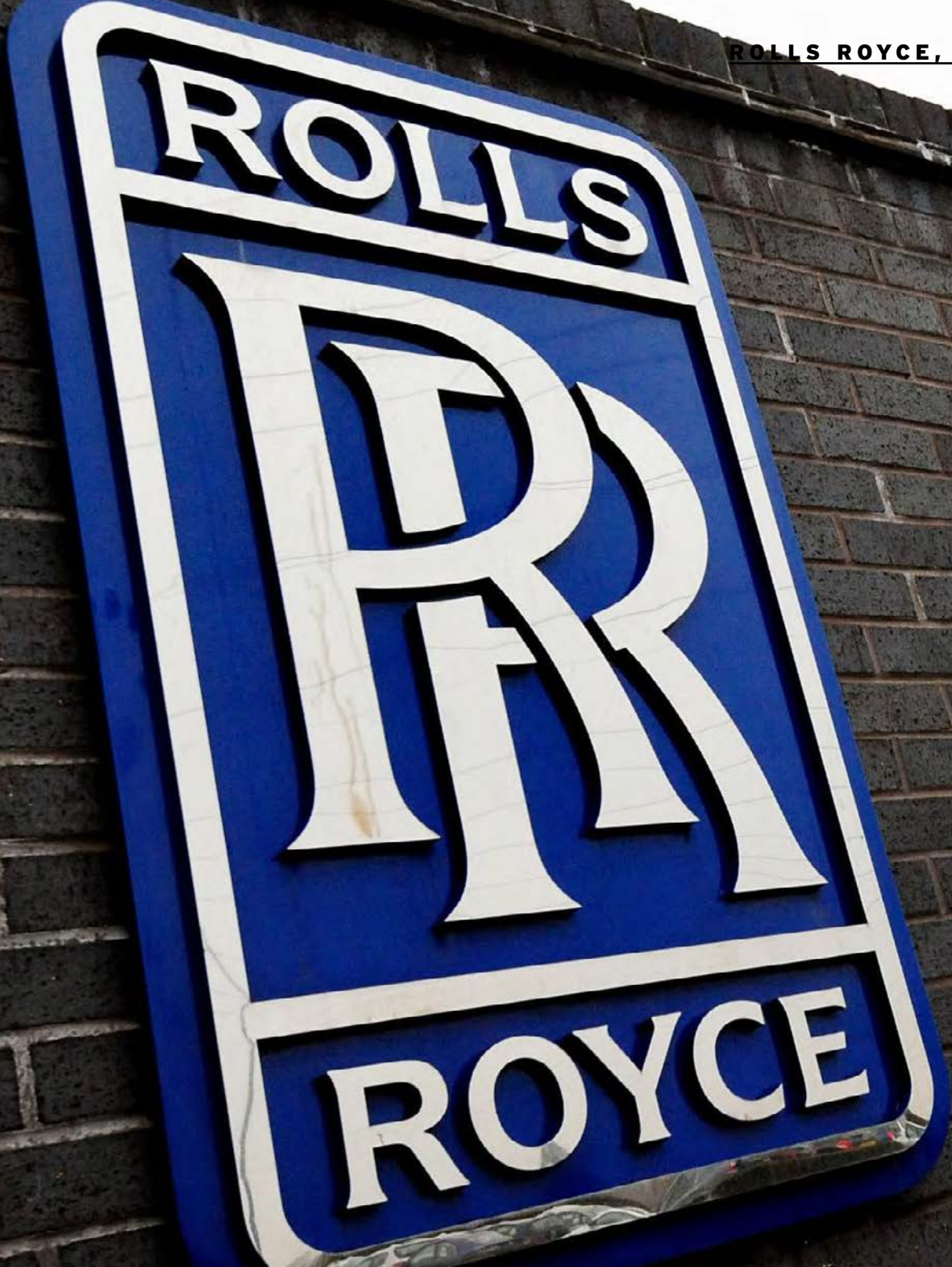


ROLLS ROYCE.

With one of our most recent supply's we serviced the new Wide Chord Fan Blades Facility extension, part of almost £50m worth of investment at the Rolls Royce site in Barnoldswick, Lancashire. The new extension, will support Rolls-Royce's plans to double the production of new aero engines over the next few years.

VIP supplied the full expansion solution which was complicated due to use of combining existing build with new. Our expertise was used from the beginning design to eventually signing off the installation with our PI insurance.





BATH SPA

Thermae Bath Spa, Britain's only natural thermal spa, located in the historic city of Bath, offers traditional and state-of-the-art spa facilities.

VIP supplied a range of both manual and actuated butterfly valves with both S/S and plastic ball valves.





GREENWICH SQUARE.

Greenwich Square is located on the vacant site of the former Greenwich District Hospital which was demolished in 2006 the new project includes 645 homes, leisure centre, library and health centre.

This project showcases the full variety of VIP valves available as we supplied ball valves, gate valves, globe valves, commissioning valve, cast iron valves as well as gas equipment. The positive benefit to the local community will be extensive, as the developers, Hadley/Mace are delivering a high proportion of the development as affordable housing.



GREENWICH SQUARE



ETHIAD CAMPUS.

The City Football Academy is a state-of-the-art football training facility. The complex is connected to the Etihad Stadium by a bridge which houses all of the club's teams, from age-group sides to men's and women's senior squads - a total in excess of 450 individuals weekly.

The impressive facility just outside the city centre showcases an array of manifold units controlled with Danfoss PICV's. Over 500 units were assembled and individually tested at our workshop. To test the system we sold 1% accurate S/S pressure gauges with test certificates issued from our inhouse calibrator. To ensure water quality the combined A&D separator, dosing pot & side stream unit was also fitted.





ST PAUL'S.

Back in 2016, VIP supplied a range of bronze valves to one of the U.K most famous cathedrals St Paul's with its iconic dome. Now a unique feature in the London skyline as part of the plant room upgrade and maintenance procedure.

This traditional job saw us supply our high quality bronze gate valve and non return valves.



ST PAUL'S CATHEDRAL



BURLINGTON SQUARE.

A 273-unit residential development, over nine storeys, will be a mix of one and two bed apartments plus penthouse suites, a landscaped courtyard, gym and communal rooftop area. The scheme, is located just a couple of minutes' walk from Manchester University's campus buildings.

VIP provided a wide range of products on this project including a pre-fabricated PRV valve setup as well as our WRAS DZR press fit ball valves. A full size range of safety valves was also delivered after being set same day on our inhouse test rig approved by Nabic.





GRAND UNION.

Grand Union is another new build development through Berkeley Group located in Alperton, close to Wembley. Apartments, restaurants, bars and a community centre at it's heart. With 11 acres of landscaped gardens, riverside meadows and waterside pathways, Grand Union will be a unique waterside destination to play, work and relax.

Another design take off done with our client where we provided the full range of expansion joints, anchors, guides as well as marked up drawings.



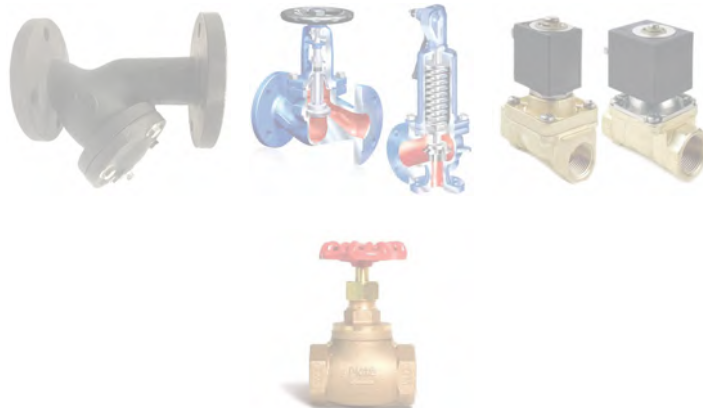
GRAND UNION



LONDON BRIDGE HOSPITAL

The London Bridge Hospital is a private hospital on the south bank of the River Thames in London. The hospital, which was designed by Llewelyn Davies Weeks and built by Bovis Construction, opened in 1986.

VIP recently supplied many new items as part of the refurbishment of the plantroom area. VIP supplied steam products, bronze valves, cast iron valves such as strainers, solenoid valves, safety valves and bellows sealed globe valves.



LONDON BRIDGE HOSPITAL



WINCHESTER SPORTS & LEISURE FACILITY

Winchester sports & leisure facility opened it's doors in the Spring of 2021. The new facility will comprise of a 50m eight-lane swimming pool, 20m teaching pool including a water confidence area, multi-use sports hall and climbing facility. Importantly the leisure park will also have a hydrotherapy suite to serve people in the local and wider community with disabilities.

As part of the new facility, VIP supplied a range of EBRO butterfly valves with a varied range of operation either lever, gearbox or electrically actuated.



WINCHESTER SPORTS & LEISURE FACILITY



CITY OF WESTMINSTER COLLEGE.

The City of Westminster College, regarded as the Learning Skills Council's flagship project, set the benchmark for future college developments across the UK. Constructed in the West London regeneration area of Paddington Green, the heart of this landmark development is a dynamic inner atrium.

VIP supplied the full range of sanitary requirements direct to site through Lecico. We liaised with our customer and offered a fantastic VE saving where the client approved the specification change.





CITY OF WESTMINSTER COLLEGE

LITTLE BARFORD POWER STATION

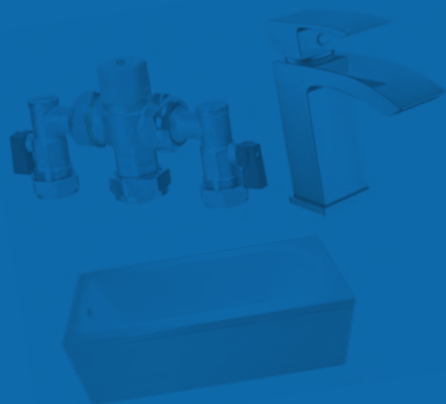
Little Barford is a combined cycle gas turbine power plant with a net capacity of 698 MW. This is sufficient to meet the electricity demands of over half a million households. The plant has two gas turbines and one steam turbine.

VIP supplied a range of large diameter fully lugged butterfly valves for the initial phase of the refurbishment followed by a variation of large nominal bore bespoke rubber bellows, that proved to be very valuable to our customer a very niche service VIP can provide. This is a niche area that VIP can service and it proved to be a valuable addition to our clients needs.



LITTLE BARFORD POWER STATION





LONDON

Incorporating HEVAC Industrial
Unit 8, Hounslow Trade Park
Hounslow TW3 3LL
T: 020 8577 7667
E: londonsales@vip-ltd.co.uk

MANCHESTER

Incorporating F Ashton Ltd
VIP House, Chaddock Lane
Astley, M29 7JT
T: 01942 885 700
E: sales@vip-ltd.co.uk

WWW.VIP-LTD.CO.UK
